

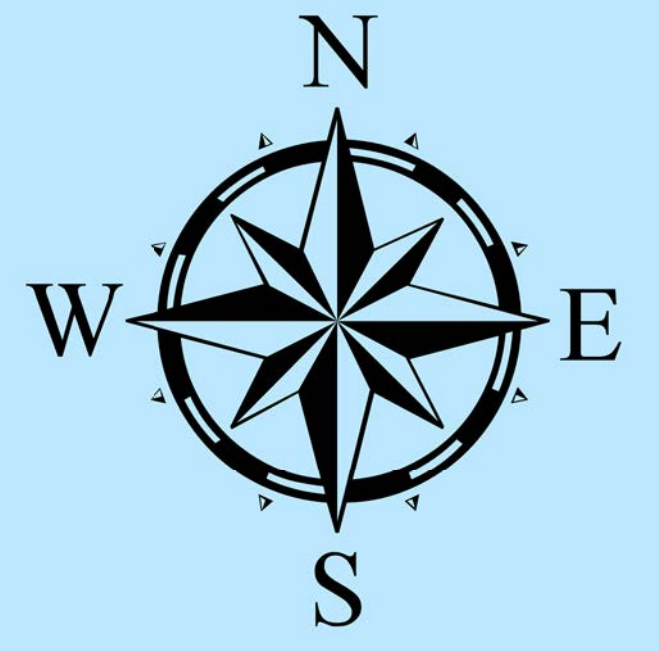
CREATED ON: 04/20/2026

SUNBRIDGE STEWARDSHIP DISTRICT

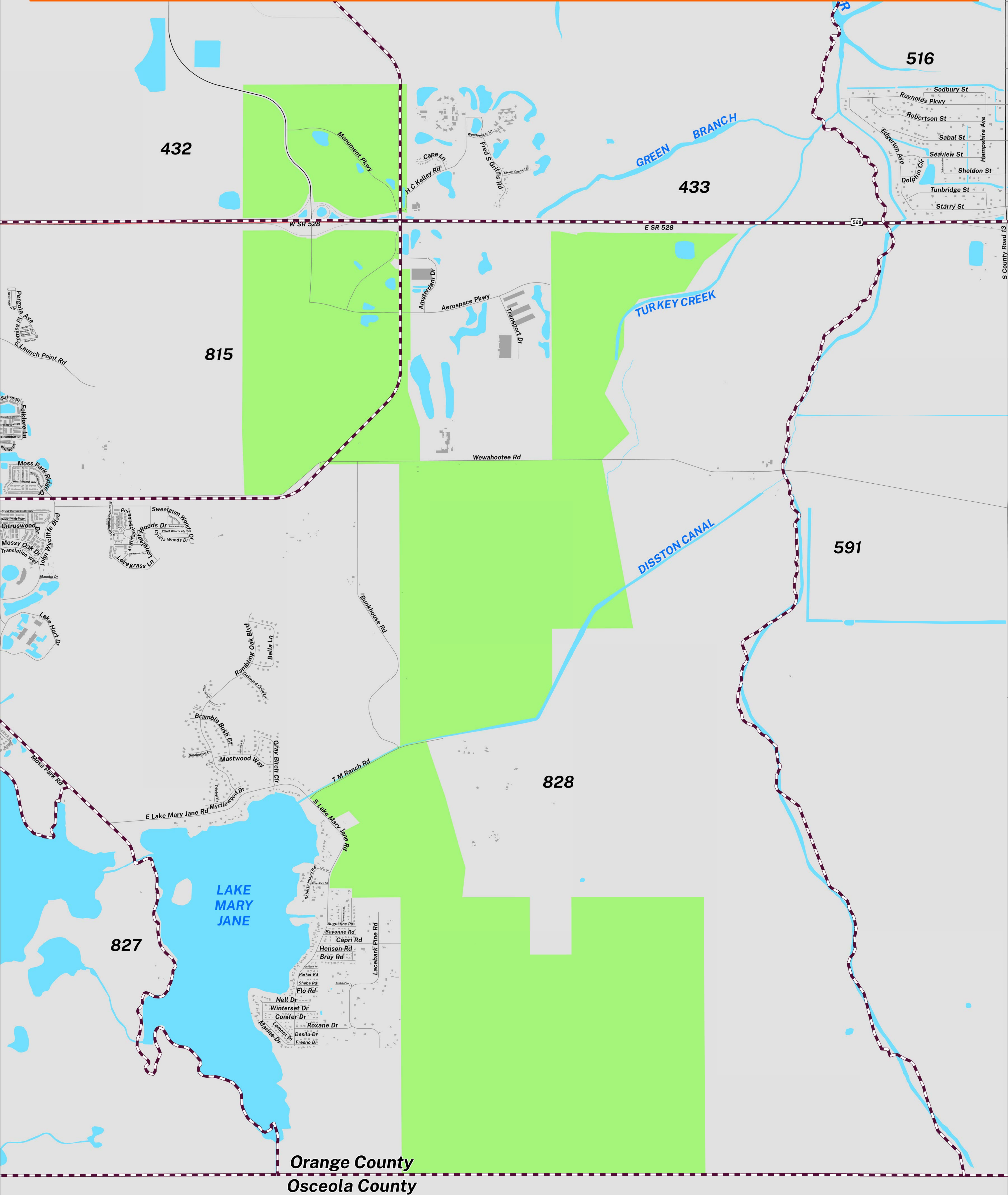
SPECIAL DISTRICT #37

ORANGE COUNTY, FLORIDA

PRECINCTS



Prepared by: Orange County Supervisor of Elections Mapping Department



SCALE: 1: 20,000



Orange County's Sunbridge Stewardship District (SPC #37) northern boundary follows a combination of Innovation Way, O U C Railroad, Wewahootee Road, east of Transport Drive and south of SR-528. The western boundary follows a combination of west of Innovation Way, extends to Wewahootee Road, east of Bunkhouse Road, extends to T M Ranch Road, South Lake Mary Jane Road and Lacebark Pine Road. The eastern boundary follows along Turkey Creek, Disston Canal, extends to T M Ranch Road and zig zags in a southeast direction towards the Orange/Osceola county boundary. The southern boundary is the Orange/Osceola county boundary.

For more detailed views of other county and municipal precincts [visit the District and Precinct Maps page](#). For more information about precinct boundaries, contact the [Orange County Supervisor of Elections office](#).

This map was produced by the Orange County Supervisor of Elections Mapping Department. More voter information can be found [on our website](#).

