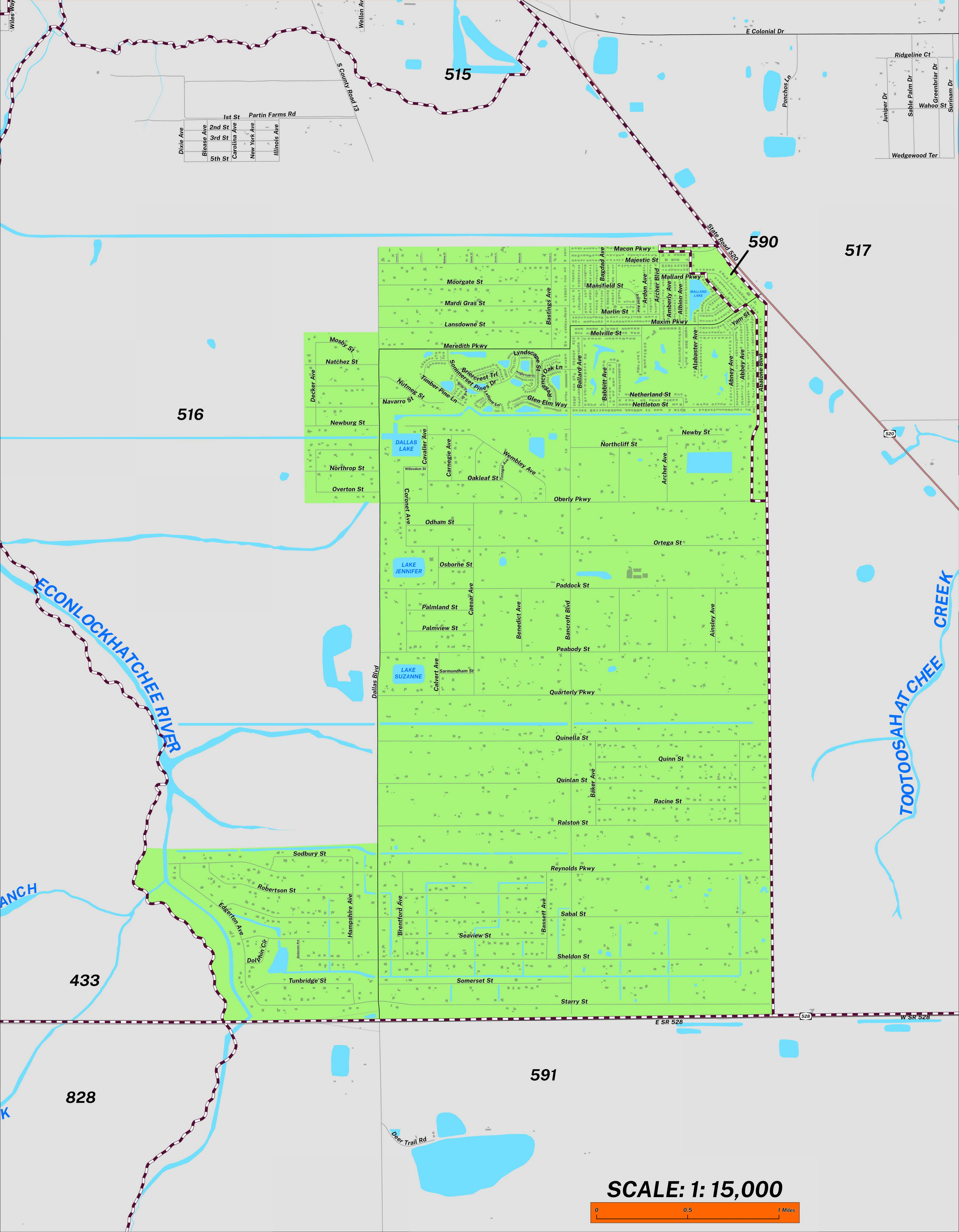
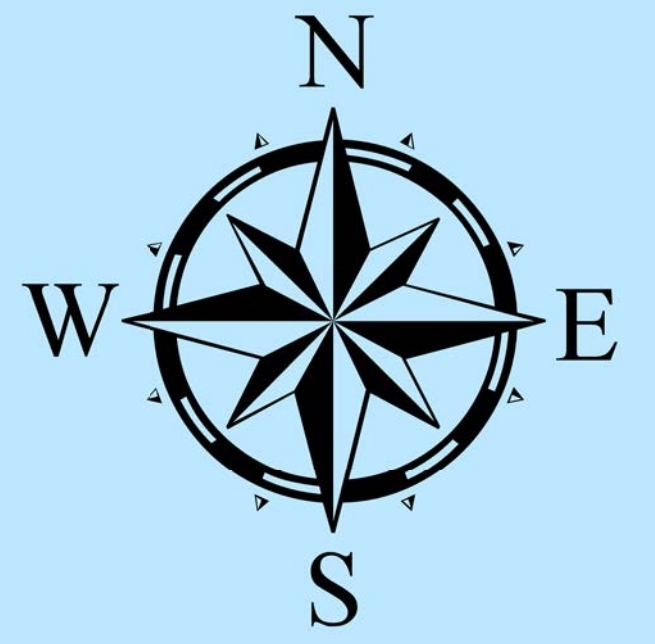


CREATED ON: 04/20/2026

# RANGER DRAINAGE DISTRICT SPECIAL DISTRICT #08 ORANGE COUNTY, FLORIDA

## PRECINCTS

Prepared by: Orange County Supervisor of Elections Mapping Department



Dixie Ave	1st St	Partin Farms Rd
Blease Ave	2nd St	
Carolina Ave	3rd St	
New York Ave	4th St	
Illinois Ave	5th St	

Juniper Dr	Ridgeline Ct
Sable Palm Dr	Greenbriar Dr
Wahoo St	Spruill Dr
Wedgewood Ter	

SCALE: 1: 15,000



Orange County's Ranger Drainage District (SPC #08) northern boundary runs north of Macon Parkway and north of Majestic Street. The western boundary runs parallel west of Decker Avenue, follows Dallas Boulevard and west of Edgerton Avenue. The eastern boundary follows a portion of SR-520, Abalone Boulevard and extends south to SR-528 to the west of Tootoosahatchee Creek. The southern boundary is SR-528.

For more detailed views of other county and municipal precincts [visit the District and Precinct Maps page](#). For more information about precinct boundaries, contact the [Orange County Supervisor of Elections office](#).

This map was produced by the Orange County Supervisor of Elections Mapping Department. More voter information can be found [on our website](#).

