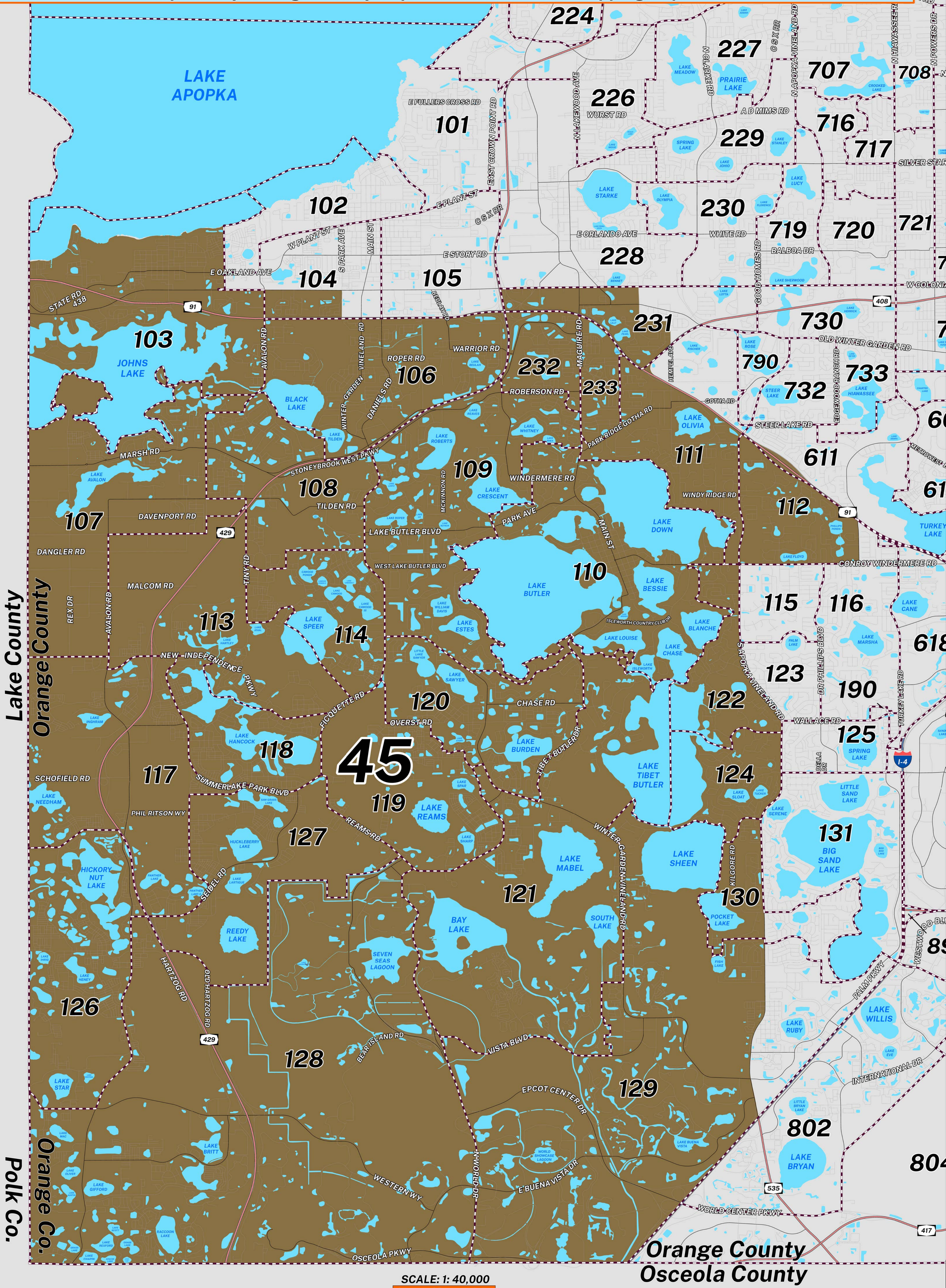




**Prepared by: Orange County Supervisor of Elections Mapping Department**



**SCALE: 1: 40,000**





Florida State House of Representatives (2022) District 45 northern boundary follows along the southern shore of Lake Apopka, West Colonial Drive and I-91. The western boundary follows along the Lake/Orange County border. The southern boundary follows along the Osceola/Orange County border. The eastern boundary follows along I-4, South Apopka Vineland Road and South Hiawasse Road.

For more detailed views of other county and municipal precincts, [visit the District and Precinct Maps page](#). For more information about precinct boundaries, contact the [Orange County Supervisor of Elections office](#).

This map was produced by the Orange County Supervisor of Elections Mapping Department. More voter information can be found [on our website](#).

