

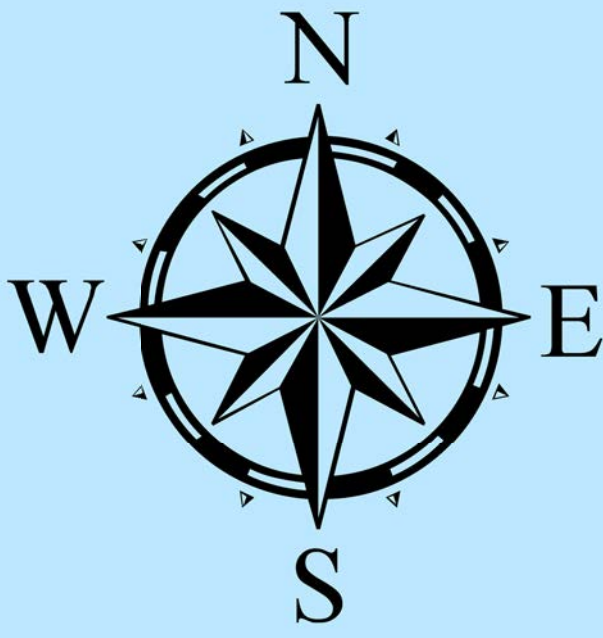
CREATED ON: 01/22/2026

SCHOOL BOARD 2022

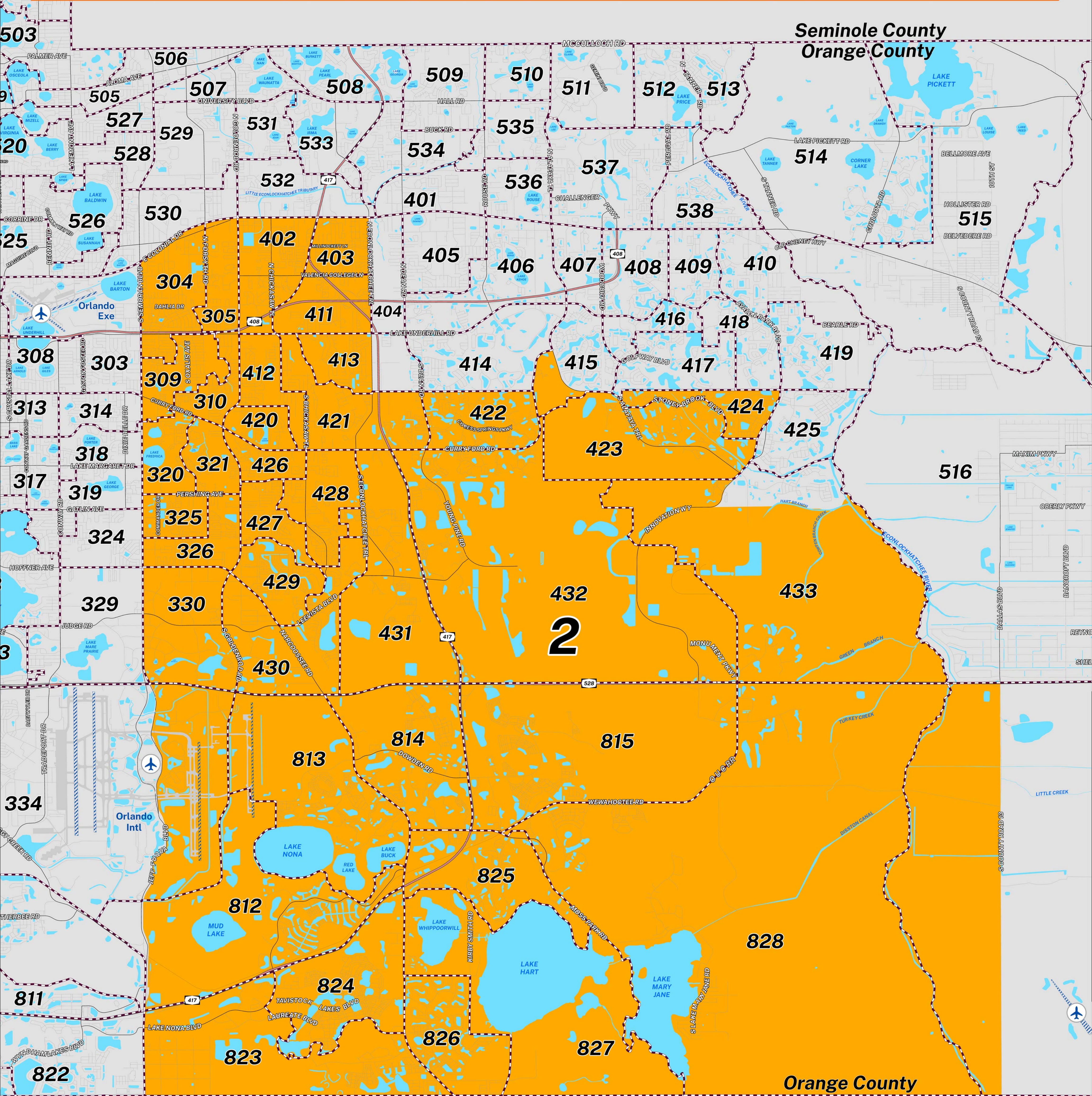
ORANGE COUNTY, FLORIDA

DISTRICT 2

PRECINCTS



Prepared by: Orange County Supervisor of Elections Mapping Department



SCALE: 1: 50,000



Orange County's School Board (2022) District 2 northern boundary follows along a road combination of East Colonial Drive, Curry Ford Road and South Alafaya Trail. The western boundary follows along South Semoran Boulevard and extends to Boggy Creek Road. The southern boundary follows along the Osceola/Orange County border. The eastern boundary follows along South County Road 13, extends to the Econlockhatchee River towards Innovation Way and Avalon Park South Boulevard.

For more detailed views of other county and municipal precincts, [visit the District and Precinct Maps page](#). For more information about precinct boundaries, contact the [Orange County Supervisor of Elections office](#).

This map was produced by the Orange County Supervisor of Elections Mapping Department. More voter information can be found [on our website](#).

