

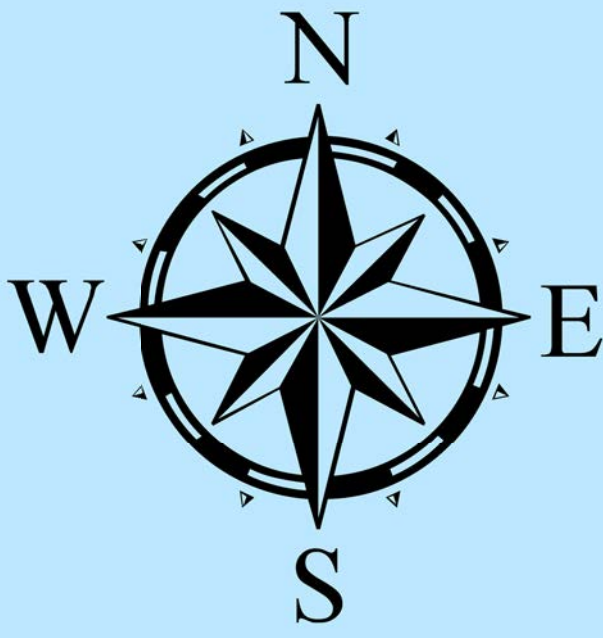
CREATED ON: 01/23/2026

SOIL & WATER 2022

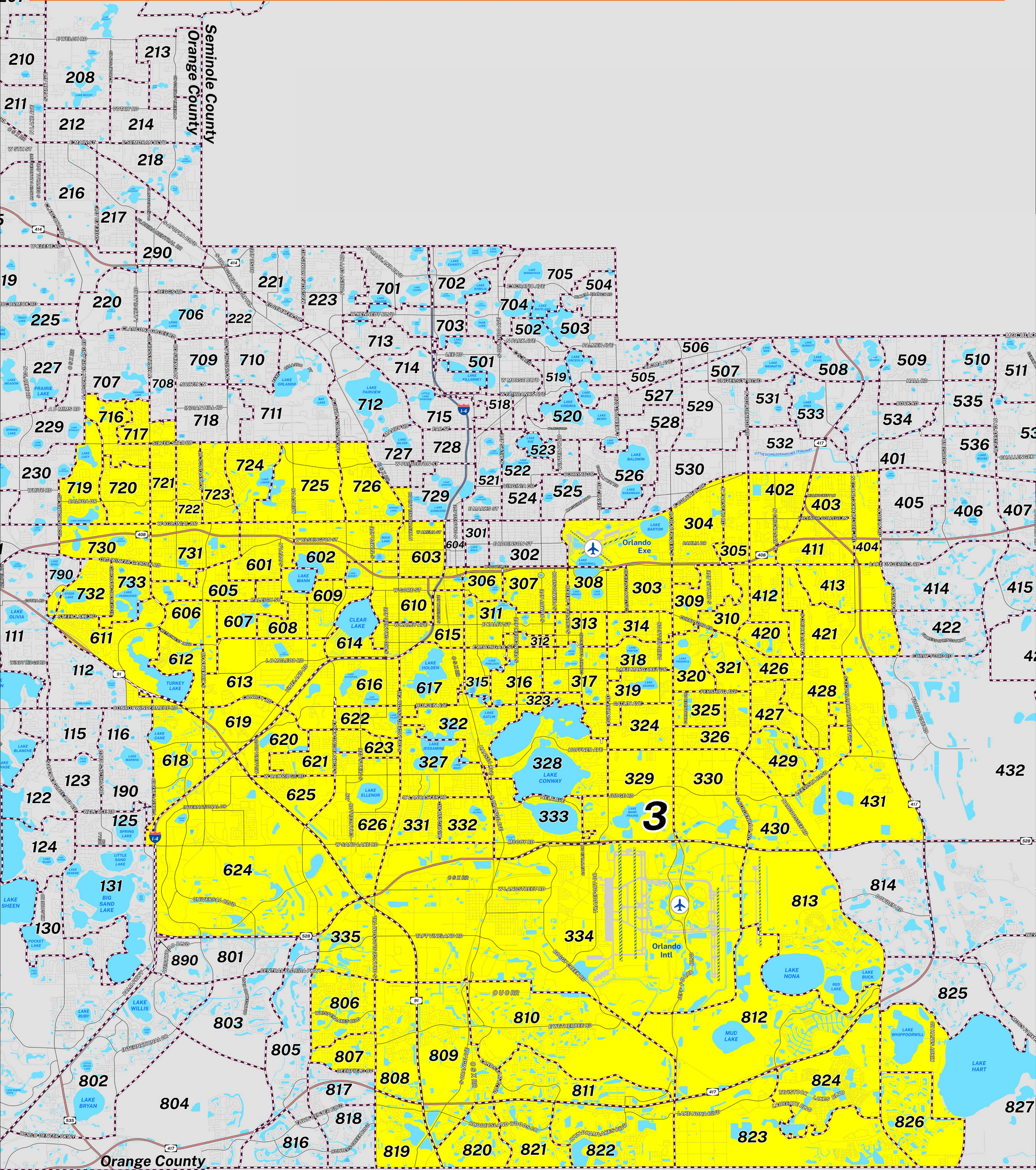
ORANGE COUNTY, FLORIDA

DISTRICT 3

PRECINCTS



Prepared by: Orange County Supervisor of Elections Mapping Department



SCALE: 1: 60,000



Orange County Soil & Water District 3 northern boundary follows along Dressage Drive, Coral Cove Drive, N Hiawassee Road, Stardust Lane, north of Sunshine Street, North Powers Drive, Silver Star Road, North Orange Blossom Trail, West Colonial Drive, I-4, South Street, Crystal Lake Drive, Maguire Boulevard and extends to East Colonial Drive. The eastern boundary follows along a combination of Dean Road, Curry Ford Road, SR-417, SR-528, Narcoossee Road, Kirby Smith Road and the west shore of Lake Hart. The southern border is the Seminole/Orange County border. The western boundary follows along North Apopka Vineland Road, Lake Stanley Road, Silver Star Road, Good Homes Road, Old Winter Garden Road, Rose Park Drive, South Apopka Vineland Road, Wilkening Farm Road, I-91, South Hiawassee Road, Conroy Windermere Road, Turkey Lake Road, West Sand Lake Road, I-4, SR-528, South John Young Parkway, Deerfield Boulevard and extends along South Orange Blossom Trail.

For more detailed views of other county and municipal precincts, [visit the District and Precinct Maps page](#). For more information about precinct boundaries, contact the [Orange County Supervisor of Elections office](#).

This map was produced by the Orange County Supervisor of Elections Mapping Department. More voter information can be found [on our website](#).

