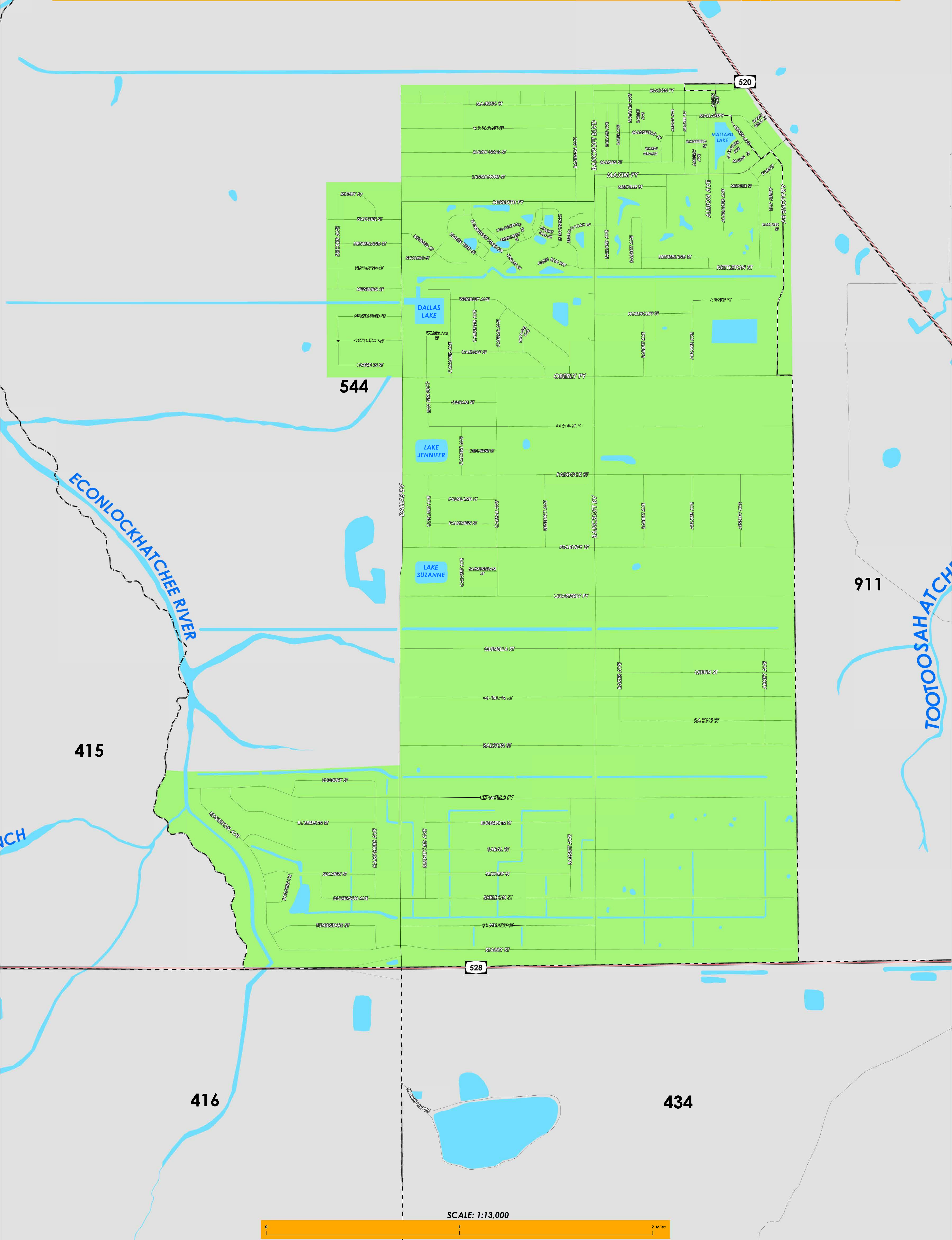


Prepared by: Orange County Supervisor of Elections Mapping Department

CREATED ON: 06/20/2024



Orange County's Ranger Drainage District is made up of Orange County precincts 544 and 911. The boundaries of this district approximately extend from Macon Parkway to the north, Beachline Expressway (State Road 528) to the south, and are connected to the west by Dallas Boulevard and just west of Edgerton Avenue. The eastern boundary roughly follows the intersection of Maxim Parkway and State Road 520 due south to State Road 528.

For more detailed views of other county and municipal precincts, including their precinct splits, [visit the District and Precinct Maps page](#). For more information about precinct boundaries, contact the [Orange County Supervisor of Elections office](#).

This map was produced by the Orange County Supervisor of Elections Mapping Department. More voter information can be found [on our website](#).