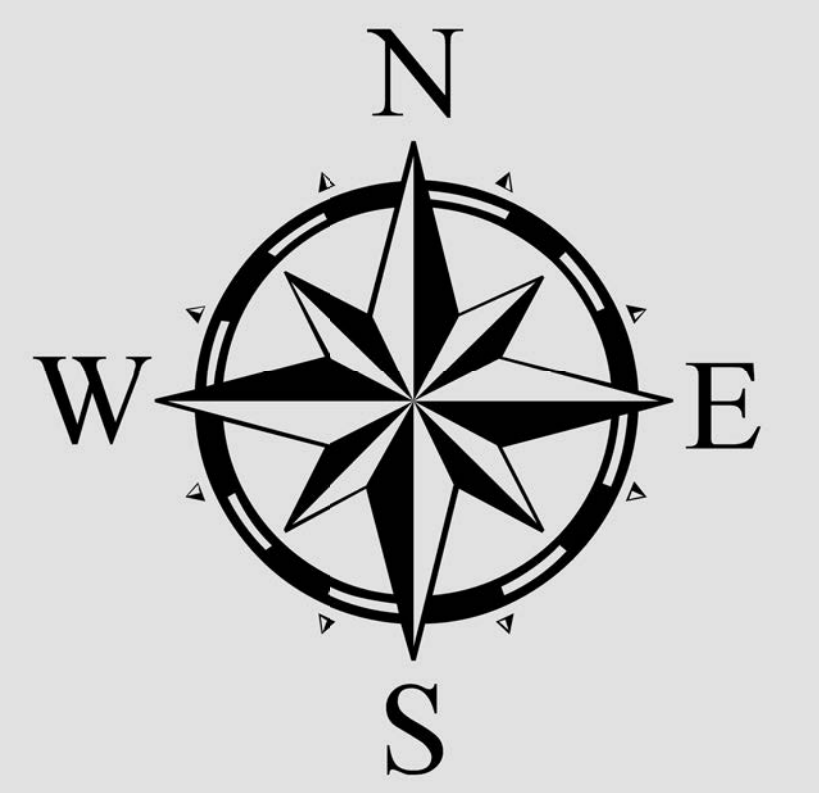




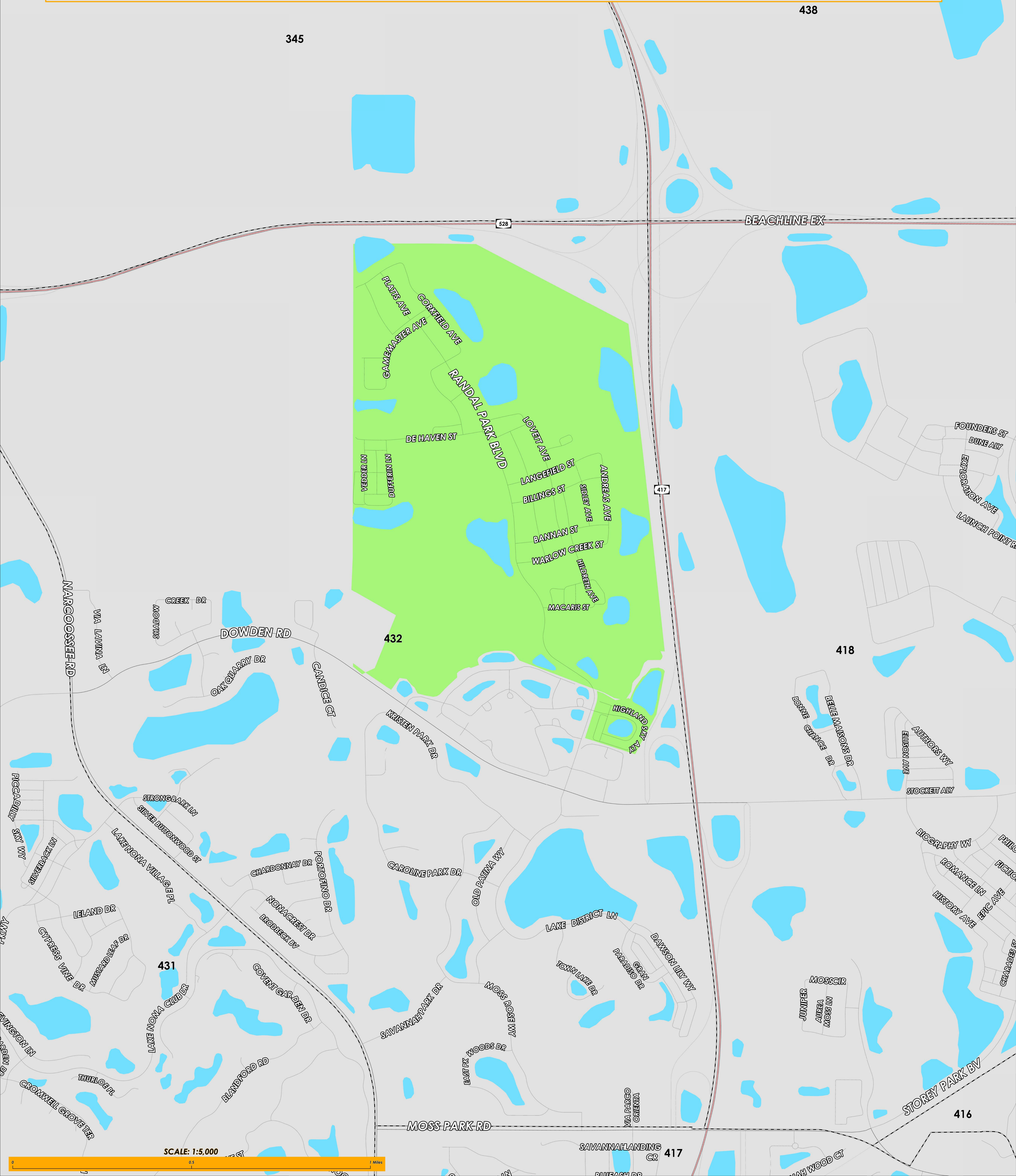
# RANDAL PARK COMMUNITY DEVELOPMENT DISTRICT

## COUNTY PRECINCTS

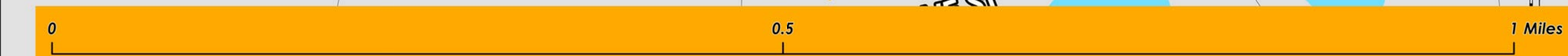
Prepared by: Orange County Supervisor of Elections Mapping Department



CREATED ON: 06/17/2024



SCALE: 1:5,000





Orange County's Randal Park Community Development District is made up of Orange County precinct 432. The boundaries of this district approximately extend to Beachline Expressway (State Road 528) to the north, Dowden Road to the south, and Central Florida Greenway (State Road 417) to the east.

For more detailed views of other county and municipal precincts, including their precinct splits, [visit the District and Precinct Maps page](#). For more information about precinct boundaries, contact the [Orange County Supervisor of Elections office](#).

This map was produced by the Orange County Supervisor of Elections Mapping Department. More voter information can be found [on our website](#).