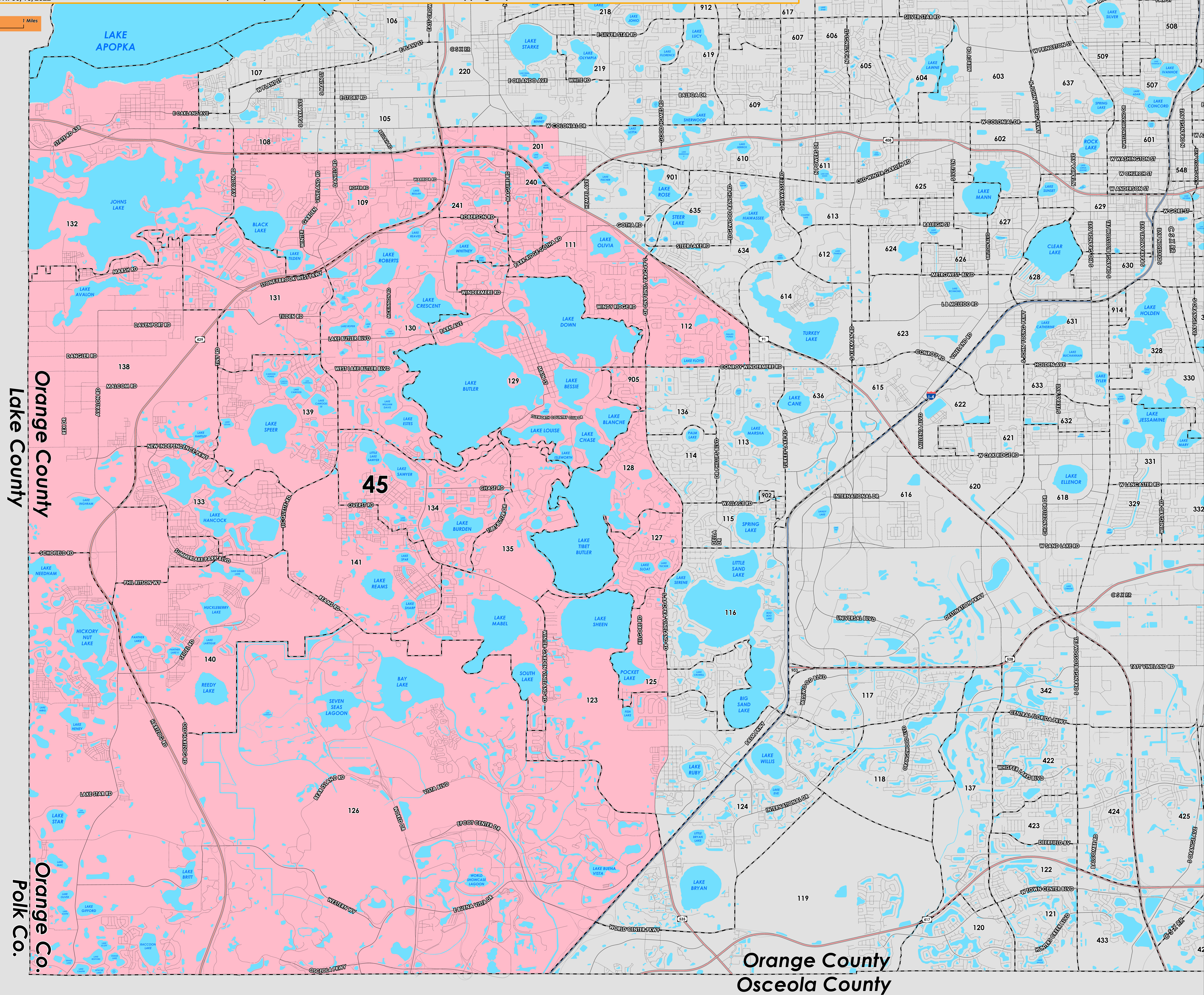
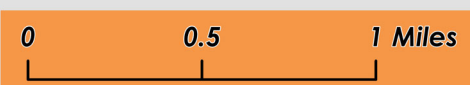




Prepared by: Orange County Supervisor of Elections Mapping Department



Florida State House of Representatives (2022) district 45 falls within western Orange County. The northern boundary runs parallel to the Florida Turnpike and along West Colonial Drive. The western boundary follows along the Lake/Orange County border and the southern boundary follows along the Osceola/Orange County border. The eastern border follows a section of Interstate 4 and extends along the Florida Turnpike. A complete list of Orange County precincts within district 45 can be found at the end of this document.

For more detailed views of other county and municipal precincts, [visit the District and Precinct Maps page](#). For more information about precinct boundaries, contact the [Orange County Supervisor of Elections office](#).

This map was produced by the Orange County Supervisor of Elections Mapping Department. More voter information can be found [on our website](#).

State House (2022) district 45 includes the following Orange County precincts:

- 108
- 109
- 111
- 112
- 123
- 125
- 126
- 127
- 128
- 129
- 130
- 131
- 132
- 133
- 134
- 135
- 138
- 139
- 140
- 141
- 201
- 240
- 241
- 905