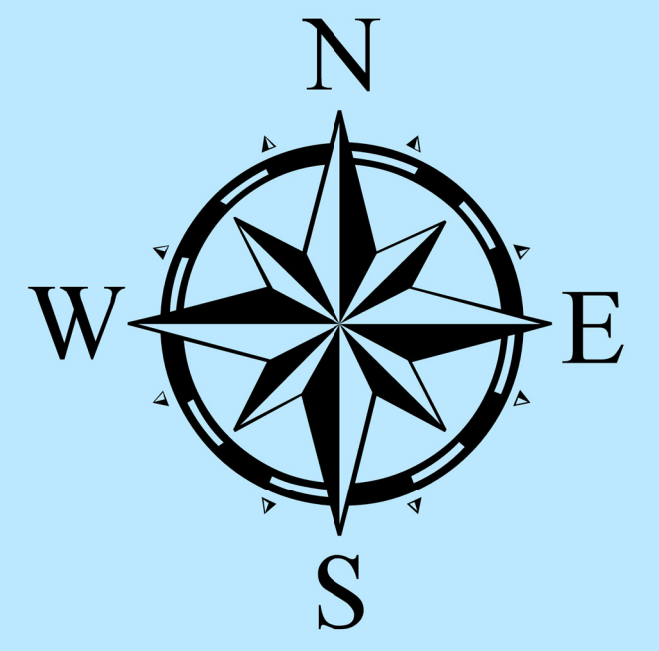


CREATED ON: 04/03/2026

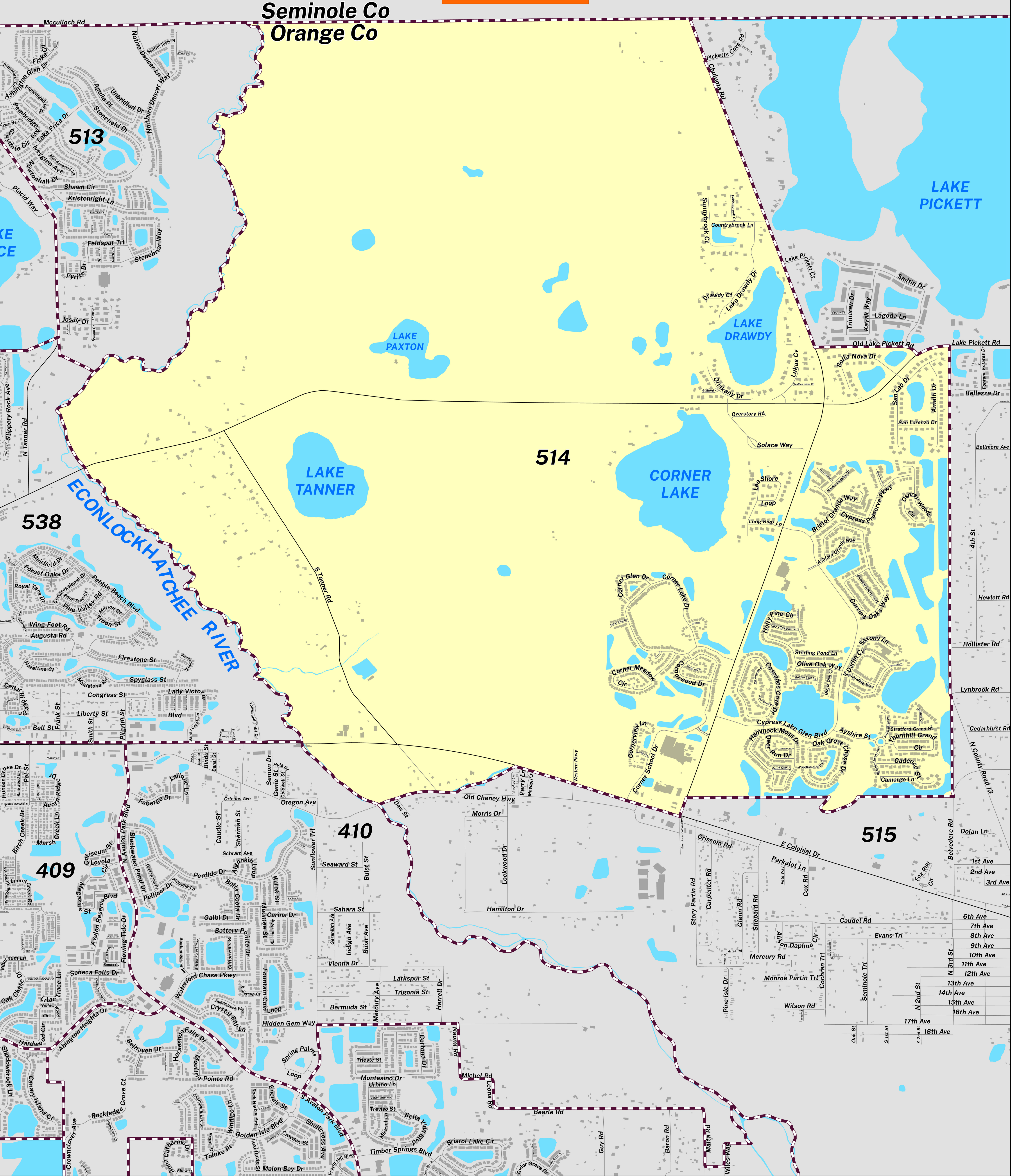
POLLING PLACE CYPRESS LAKES HOA CLUBHOUSE 17794 CYPRESS LAKE GLEN BLVD

PRECINCT 514



Prepared by: Orange County Supervisor of Elections Mapping Department

SCALE: 1: 12,000



The Polling Place for Precinct 514 is Cypress Lakes HOA Clubhouse at 17794 Cypress Lake Glen Boulevard.

Precinct 514 (2026) northern boundary is the Seminole/Orange County border. The western boundary follows alongside the Econlockhatchee River. The southern boundary follows a combination of Old Cheney Highway, East Colonial Drive, extends south of Hammock Moss Drive, Camargo Lane and extends to Belvedere Road. The eastern boundary follows a road combination of Chuluota Road, Old Lake Pickett Road, Lake Pickett Road then extends west of 4th Street down to Belvedere Road.

Precinct 514 contains sub precincts of:

514A is with district assignments of U.S. Congress 10, State Senate 17, State House 37, County Commission 5, School Board 1, and Soil & Water 5.

514B is with district assignments of U.S. Congress 10, State Senate 17, State House 35, County Commission 5, School Board 1, and Soil & Water 5.

For more detailed views of other county and municipal precincts, [visit the District and Precinct Maps page](#). For more information about precinct boundaries, contact the [Orange County Supervisor of Elections office](#).

This map was produced by the Orange County Supervisor of Elections Mapping Department. Additional voter information can be found [on our website](#).

